

Cambridge Waste Water Treatment Plant Relocation Project
Anglian Water Services Limited

Appendix 20.2: Water Walkover

Application Document Reference: 5.4.20.2
PINS Project Reference: WW010003
APFP Regulation No. 5(2)a

Project: CWWTPR

Our reference: <Insert Text> **Your reference:** <Insert Text>

Prepared by: H Small **Date:** 18th May 2021

Subject: Water Survey - walkover

1 Background

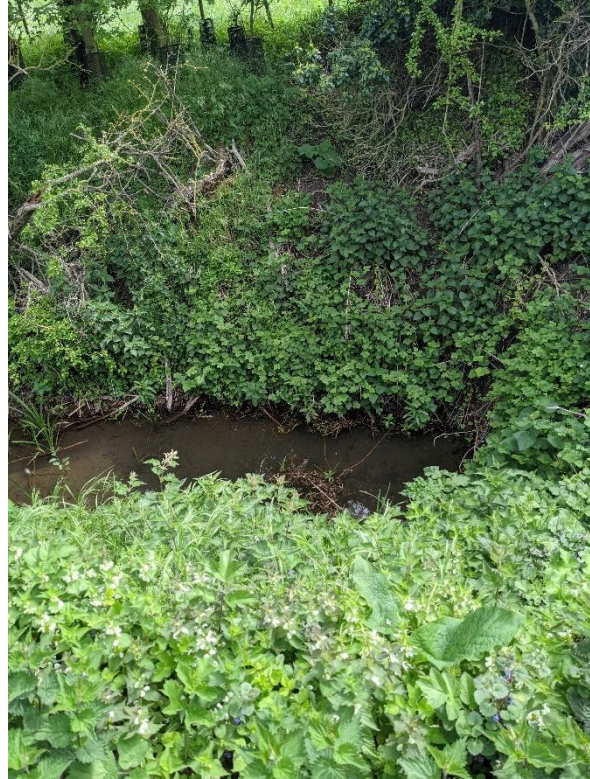
A water survey site walkover was conducted by a Mott MacDonald Hydrogeologist on 17th and 18th May 2021. The aims of this were to gain better understanding of the water features and drainage on site. This memo notes what was encountered on site with photos. Additional photos are available.

1.1 Field Drains and Black Ditch

There are several field drains across the site. These were observed to be consistent with what is presented on OS maps. Field drains were mostly dry, boggy or had low flows. Drains were generally 0.5 to 1m deep.



Black ditch was observed in the north and was noted to be significantly deeper with steep sides. This was approximately 2-3m deep. Water was flowing gently and was estimated to be 0.2m deep.



1.2 Low Fen Drove Way

There are several ditches noted around LFDW bridge which crosses the A14. These are as noted on the OS maps. The ditches are either dry or have shallow water. The area is heavily vegetated and many of the ditches were difficult to access or view due to high hedges. All viewed ditches were observed to be dry.

It was noted that the south side of the LFDW bridge has drain covers over catchpits. It was not obvious where these discharge to but it is likely to one of the drains alongside the LFDW bridge.



1.3 Biggin Pin Plantation (pond)

This pond was noted to be present as noted on OS maps. The pond has sloped sides which are approximately 3m deep and the pond is 5m wide. The water in the pond is stagnant and there was no obvious source of inflow to the pond. The pond is surrounded by trees and hedges and so is difficult to access.



1.4 Honey Hill

OS maps note a small surface water feature on honey hill, of a small drain which runs to a pond. On site observations noted that the pond was present but the upstream drain was dry/boggy. The pond was stagnant. There was no indication of the pond/drain being fed by a chalk spring.



1.5 Biggin Abbey

A borehole is recorded at Biggin Abbey.

There are several field drains. It was noted that a blue pipe discharges to a drain north of Biggin Abbey, adjacent to a path (///sketches.simple.backhand).

1.6 Quy Water

There are several ditches adjacent to Quy Water, including the south end of Black Ditch. Most of these ditches were observed to be dry and there are none that connect or discharge to Quy Water.

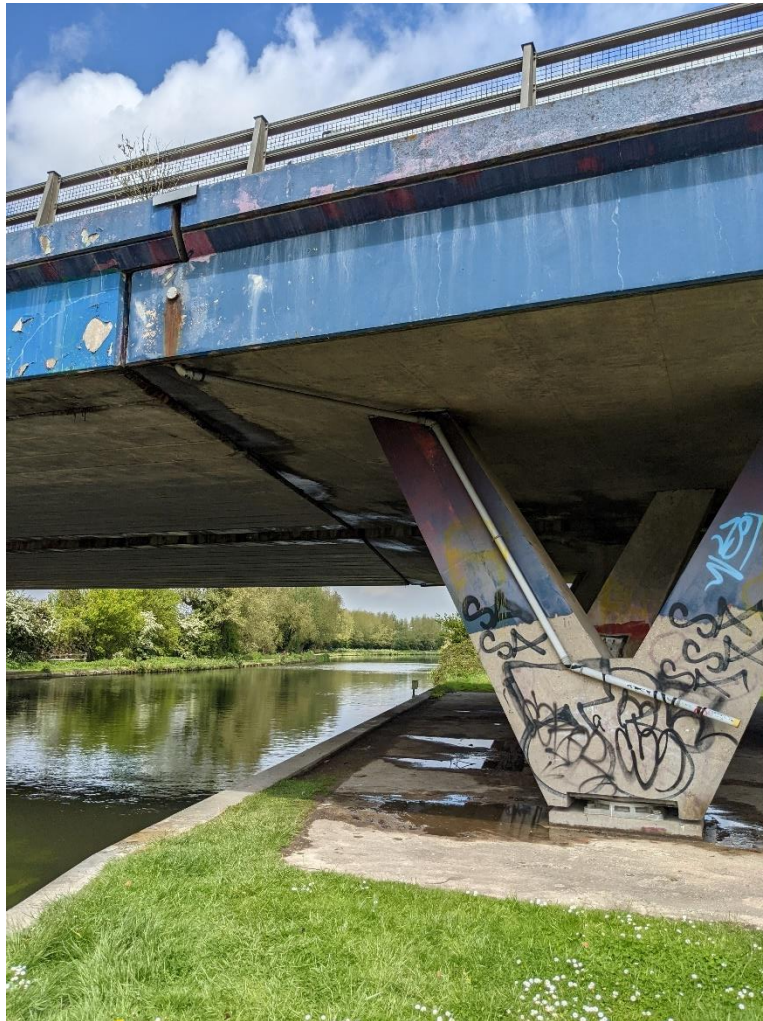
1.7 A14 Bridge over River Cam

In general, drains located adjacent to the River Cam at the A14 bridge are as they appear on OS maps. However, it was noted that the drain north of the bridge appears culverted under the bridge embankments. It is not known where this then discharges to.

It was observed on site that the private land south of the A14 bridge, Poplar Hall, was extremely boggy.



The bridge drainage appears to be through drain pipes which then discharge onto ground under the bridge. Four of these were noted.



1.8 CWS Railway Line

The old railway line was visited at one location (///barabarian.rivers.volume) and was noted to currently be used as an access track. The railway line consists of a mound approximately 1.8m high and 3m wide. The material it is composed of is unknown but appeared to be mostly soil. No obvious signs of contamination were noted.

Get in touch

You can contact us by:



Emailing at info@cwwtpr.com




Calling our Freephone information line on **0808 196 1661**



Writing to us at **Freepost: CWWTPR**



Visiting our website at 

You can view all our DCO application documents and updates on the application on The Planning Inspectorate website:

<https://infrastructure.planninginspectorate.gov.uk/projects/eastern/cambridge-waste-water-treatment-plant-relocation/>